

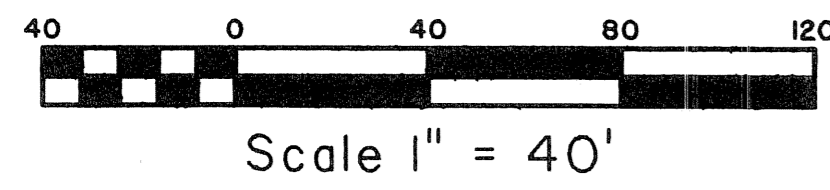
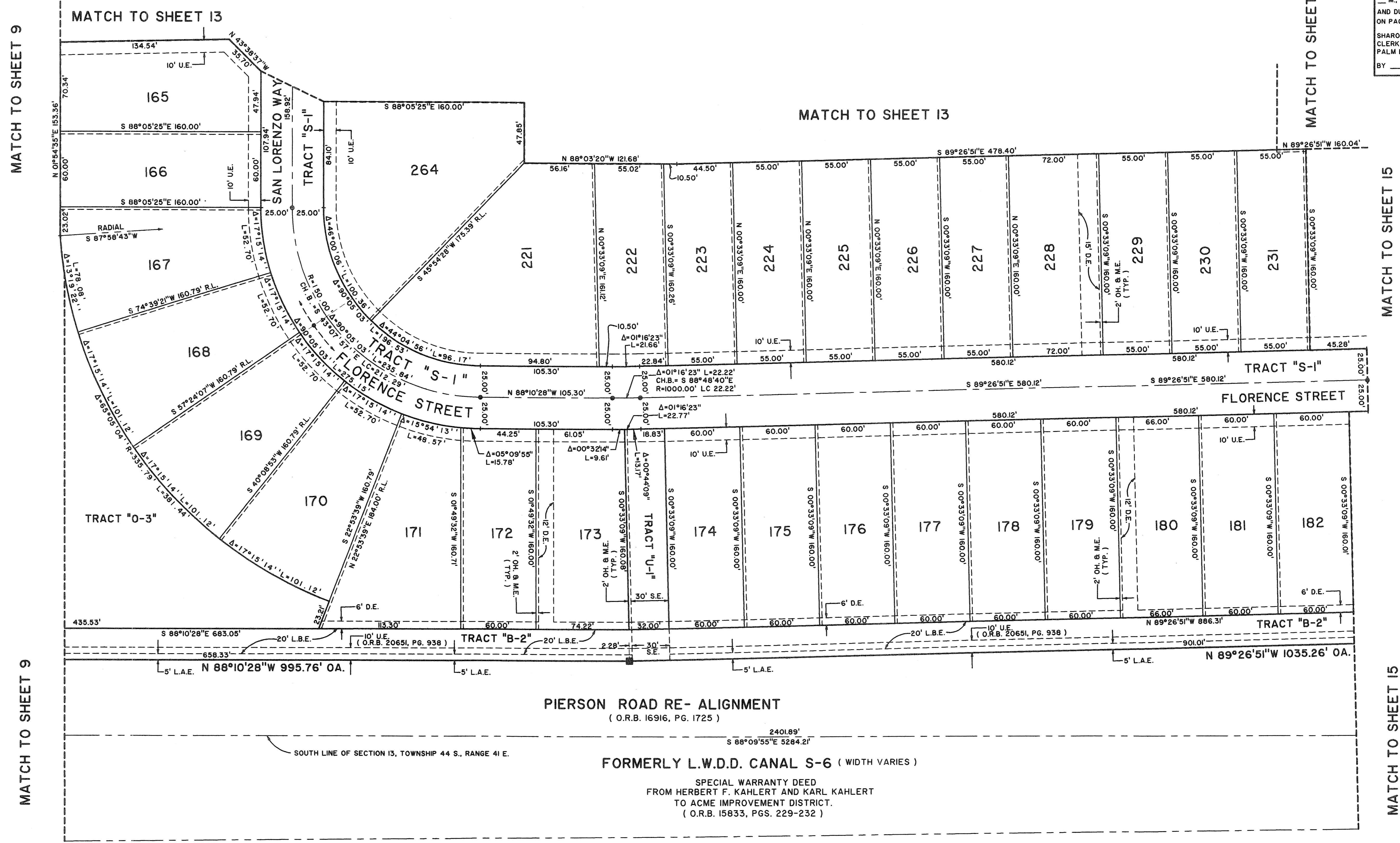
KEY MAP
NOT TO SCALE

LANIER PROPERTY

LYING IN SECTION 13, TOWNSHIP 44 SOUTH, RANGE 41 EAST,
VILLAGE OF WELLINGTON, PALM BEACH COUNTY, FLORIDA.
SHEET 14 OF 17 MARCH, 2006

88

STATE OF FLORIDA SS
 COUNTY OF PALM BEACH
 THIS PLAT WAS FILED FOR RECORD AT _____
 M., THIS _____ DAY OF _____ 2006
 AND DULY RECORDED IN PLAT BOOK NO. _____
 ON PAGE _____
 SHARON R. BOCK,
 CLERK AND COMPTROLLER,
 PALM BEACH COUNTY
 BY _____ D.C.

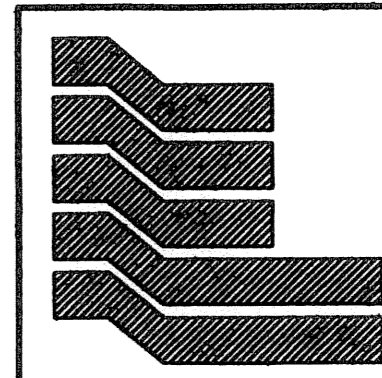


PALM BEACH FARMS COMPANY PLAT NO. 3
BLOCK 26, TRACTS I-4
 (PLAT BOOK 2, PAGES 45 - 54)

PIERSON ROAD RE- ALIGNMENT
 (O.R.B. 16916, PG. 1725)

FORMERLY L.W.D.D. CANAL S-6 (WIDTH VARIES)

SPECIAL WARRANTY DEED
 FROM HERBERT F. KAHLERT AND KARL KAHLERT
 TO ACME IMPROVEMENT DISTRICT.
 (O.R.B. 15833, PGS. 229-232)



Landmark Surveying & Mapping Inc.
 1850 Forest Hill Boulevard
 Ph. (561) 433-5405 Suite 100 W.P.B. Florida
 LB # 4396

LANIER PROPERTY